



IMPACT REPORT

2022-2023

Maui United Way

CHANGING LIVES & IMPROVING OUR COMMUNITY



OUR MISSION:

To bridge resources that enrich and empower our County of Maui community.



CHAIRWOMAN'S MESSAGE

Aloha Maui United Way 'Ohana,

On behalf of the Maui United Way Board of Directors, I want to express our deepest gratitude for your contributions and support. Our last fiscal year was filled with both opportunities and challenges. Through it all, our united community of talented staff, dedicated volunteers, generous donors, corporate partners, policymakers, and partner agencies worked together to meet the critical needs of the most vulnerable populations in our community while striving to address systemic issues and inequities.

The ongoing impact of the COVID pandemic continues to affect our Maui nui community and the people we serve. As the cost of living continues to soar, so does the demand for nonprofit services to assist with housing, healthcare, mental health, substance abuse, childcare, employment, and other vital areas. As the needs are increasing, donations to support this important work are decreasing. This trend is not

sustainable. We are at a pivotal time where we must reimagine our impact strategies and revenue model to increase the resources available to strengthen our community now and in the future.

Maui United Way has worked in and with this community for over 75 years. Throughout that time, we have demonstrated our ability to adapt and grow – while centering our work on uniting the community to affect positive change. That experience has positioned us well to take on the current challenges through innovation and collaboration. But we cannot do it alone. As we evolve to meet changing needs and take advantage of new opportunities, we ask for your continued support and that you invite others to join our efforts to create a truly united community where everyone can thrive.

Mahalo,
Shanda Vangas
Chairwoman, Board of Directors



PRESIDENT'S MESSAGE

Aloha Maui County 'Ohana,

As we reflect on the past year, we recognize the incredible challenges our community has faced, including a growing ALICE (Asset Limited, Income Constrained, Employed) population, now over 52%, and widening equity gaps. Despite these obstacles, I am filled with immense gratitude for the unwavering support, resilience, and determination of our 'Ohana, who continue to uplift one another in times of need.

At your Maui United Way, we are deeply grateful for the contributions and dedication of our donors, volunteers, and partners in our mission to create lasting change. Your collective efforts have made a significant impact, and together we have made strides towards closing equity gaps and providing essential resources for those in need.

We are heartened by the support our community has shown, and we remain committed to addressing disparities and fostering a brighter future for generations to come. I encourage each of you to continue standing with us in our mission. Every donation, volunteer hour, or shared story contributes to the strength of our 'Ohana and the progress we achieve together.

With heartfelt appreciation, I thank you for your ongoing support. May the spirit of Aloha guide us as we work towards a more equitable and prosperous Maui County.

Mahalo,
Nicholas Winfrey
President, Maui United Way



HIGHLIGHTS OF THE YEAR

MAUI UNITED WAY IN YOUR COMMUNITY

For over 75 years Maui United Way (MUW) has served as more than just a thought leader in the nonprofit space – we have been a catalyst for positive and permanent change. Each day, in all corners of Maui County, we are giving people the tools, resources, and knowledge they need to strengthen their lives. We are a vehicle for change, connecting people with the causes that are most important to them. We have ensured that non-profit services are available for those in need. Together, with our community partners, we continue to impact sustainable change and provide hope for a better tomorrow.

Last year, over 28,000 non-profit services were provided to people in need through the generous support of our community. MUW is committed to improving the lives and futures of individuals, children, and families by strategically investing in programs that support the needs of **EDUCATION**, **FINANCIAL STABILITY**, and **HEALTH**. MUW partners with non-profit agencies to provide critical programs; mobilizes hundreds of volunteers to give back; and advocates for positive change.

EDUCATION



INDIVIDUALS SERVED

HEALTH



INDIVIDUALS SERVED

INCOME SUSTAINABILITY



INDIVIDUALS SERVED



“With the help of generous sponsors, donors, and supporters we were able to fulfill 100% of the requests for this school year.”

TOOLS FOR SCHOOL DRIVE

Maui United Way's 10th Annual Tools for School Drive shifted its focus this year to requesting supplies that were the biggest financial burdens to families. More than 350 keiki, including keiki on Lānaʻi, were also served by the drive, with off island transportation donated by the US Coast Guard. The drive was made possible through partnerships with Pacific Media Group, HMSA, and Keller Williams Realty Maui realtors Lara Schoeppner and Samantha Kramer. Drop-off locations were held at HMSA, JW Cameron Center, Pacific Media Group Stations, and Big Brothers Big Sisters. Brayden Kitagawa, an 8th grader at Kalama

Intermediate, dedicated his community service project to support the Tools for School Drive on August 6th during the Classic Cruisers event at Peggy Sues. Kitagawa along with Mayor Victorino, Council Member Sugimura, Maui Classic Cruisers and members of the community donated over 1,300 pounds of school supplies.

“With the help of generous sponsors, donors, and supporters we were able to fulfill 100% of the requests for this school year,” said Makana Nunes, Community Impact Coordinator for Maui United Way. “Mahalo to our amazing Maui Community for continuously giving so generously.”



The giving spirit was alive and well this holiday season, and those who could donate stepped up and gave with their hearts.

HOLIDAY TOY DRIVE

Maui United Way and Friends of the Children’s Justice Center (FCJC) with sponsorship from Pacific Media Group (PMG) held their 2022 Holiday Toy Drive to benefit children in need on Maui, Moloka’i, and Lāna’i. It’s been eight years since we joined forces and have been serving our community’s keiki with the help of generous donors. Bank of Hawaii served as the main drop-off location. The giving spirit was alive and well this holiday season, and those who could donate stepped up and gave with their hearts. With the overwhelming support of the Maui community, we were able to reach our goal and filled 100% of requests, and distributed over 1,870 toys to Keiki in need on Maui, Lāna’i, and Moloka’i. All toys were distributed through Maui United Way’s non-profit partner agencies as well as the partners of Friends of the Children’s Justice Center.

“Special mahalo to our sponsor PMG, Bank of Hawaii, Big Brothers Big Sisters of Maui, Seabury Hall, Pu’u Kukui Elementary School, Royal Lahaina Resort, Tiffany’s Maui, Mark Klaschka, and every donor and partner for your support in making this year’s drive successful. It was very touching to see how many people chose to give even in these tough times,” shared Maui United Way’s President and CPO, Nicholas Winfrey.

KAUKAU 4 KEIKI

Maui United Way joined The Kaukau 4 Keiki (K4K) program in 2021 as the fiscal sponsor. The K4K attempts to address the youth food access gap by providing students with a weekly box of food, delivered directly to students’ homes, for families who cannot access state Department of Education distribution sites. Each box contains milk, bread, protein, and fresh Maui produce and is delivered by a team of community members. The 2022 Kaukau 4 Keiki Spring Program continued for spring break and provided 1,200 boxes of food and fresh produce to families on Maui, Moloka’i, and Lāna’i. All boxes were delivered by 100 volunteers

who donated over 675 hours of their time. Sentry Insurance Foundation and Nuestro Foundation provided financial support to Maui United Way for the Kaukau 4 Keiki Spring Program which went towards the purchasing of food, distribution, and administration efforts to run the program on Maui, Moloka’i, and Lāna’i. Maui United Way continued serving as the fiscal agent along with community support from HFUU Hāna Chapter, Hawaii Food Service Alliance, Sensei Lāna’i, Maui Nui Food Hub, Seabury Hall, Change Works Hawaii, Sustainable Moloka’i, Maui Food Bank, Blue Zones Project Maui, Matson, Tri Isle Trucking, Hyatt Regency Maui Resort, Mahi Pono, and Maui, Moloka’i, and Hāna farmers.



30 FOR 30 CAMPAIGN

During National Volunteer Week, Maui United Way launched its newest campaign, inviting families and individuals in our community to donate 30 minutes of their time and 30 dollars a month to support our work as an ‘ohana. As we continue to

navigate the challenges of our time, the need for resources to support our community has never been greater. At Maui United Way, we are committed to ensuring that everyone in our community has access to the resources and support they need. One of the challenges we face is engaging younger generations in

the important work of giving back. We know that many younger individuals are passionate about making a difference in their community but may not have the financial resources to make a significant donation. Build a team or give as an ‘ohana and join ‘30 for 30! With just a small commitment of time and resources, we can make a big difference in the lives of those in need. We know that many of you are already committed to supporting our work, and we are grateful for your generosity and dedication. We hope that you will join us in encouraging younger generations to get involved and make a difference in our community.



LEAVE A LEGACY



NASA HARVEST/DATA PROJECT

The NASA Harvest Data Project is a program led by NASA, the United States' space agency, with the aim of utilizing satellite data and other remote sensing technologies to improve global food security. NASA Harvest expanded its domestic food security work to the Hawaiian Islands. The project focuses on collecting, analyzing, and disseminating information on agricultural systems and crop production worldwide. By leveraging satellite imagery, data analysis, and machine learning techniques, NASA Harvest aims to provide timely and accurate information to support agricultural decision-making, policy development, and sustainable land management practices.

Harvest's AI lead, Hanna Kerner, partnered with Maui United Way, UHMC, and Responsible Markets to create a GIS-enabled food security dashboard that will fill knowledge gaps in agricultural production across Maui County with a focus on indigenous farmers. Through these collaborations, NASA Harvest works towards advancing the understanding of crop conditions, monitoring crop growth and health, predicting yields, identifying potential risks and vulnerabilities, and ultimately enhancing agricultural productivity and food security worldwide. Once completed, the dashboard will allow farmers and policymakers to continuously analyze local crop conditions and inform strategies to combat food insecurity and boost local production.



Through our planned giving program, your gift to Maui United Way goes beyond individual causes or organizations. It develops long-term prevention strategies, and yet remains flexible to meet emerging needs.

TO LEARN MORE: email nicholas@mauiunitedway.org

FISCAL SPONSORSHIPS

Maui United Way works to support our community by providing administrative support to those agencies who don't have or are work towards getting their 501c3 tax-exemption status. One of many programs we support, is AVID, Advancement Via Individual Determination, a college readiness system for elementary through higher education that is designed to increase school wide learning and performance.



MAUI UNITED WAY RECEIVES AWARD FOR OUTSTANDING NON PROFIT BUSINESS

The Mayor's Small Business Awards recognizes outstanding businesses, both for profit and nonprofit in the community that have 100 or fewer employees. All nominees and winners were honored at an awards ceremony on Oct. 6, 2022 at the Maui Beach Hotel. We are truly honored to receive the Mayor's Small Business Award. This recognition is a testament to the hard work and dedication of our team, as well as the unwavering support of our community. Together, we have been able to make a significant impact in the lives of individuals and families in need. It is through collaboration and a shared vision that we can create lasting change and build a stronger, more resilient Maui County. We are grateful for this opportunity and look forward to continuing to improve lives and strengthen our community.



DE&I STATEMENT

Maui United Way, with funding support from Nuestro Futuro Foundation and facilitation by 'A'ali'i Alliance, brought together a diverse group of community members from Maui, Moloka'i, Lāna'i and the state to develop a new Diversity, Equity and Inclusion statement. Maui United Way President and CPO Nicholas Winfrey said: "We are proud to acknowledge the underlying causes of inequity in our community and will continue striving to lead by example in this space.

"With aloha at the center of our work, Maui United Way acknowledges the past and ongoing injustice here in these islands and works to set it right," the statement says. "Through this acknowledgment and action, we will find a Hawai'i where race, ethnicity, national origin, gender, gender identity, sexual orientation, class, disability status, geography, age and all other identities are embraced as assets that help to create beautiful contributions for the good of our communities." This statement is a short version of a longer more detailed statement that can be found on the Maui United Way website:

www.mauiunitedway.org/what-we-do

WAYS TO GIVE

Join us in creating a lasting impact and making a positive difference in the lives of individuals and families in Maui County. Your Maui United Way is dedicated to improve our community and provides various avenues through which you can contribute:

DONATE SECURELY ONLINE:

Visit our website to make a secure online donation.



VOLUNTEER:

We greatly appreciate the assistance of volunteers who contribute their time and effort to support our programs and events throughout the year.

CORPORATE GIVING:

If you represent a company, there are several corporate giving options available. These include sponsorships, employee giving campaigns, and matching gift programs.

LEGACY GIVING:

Consider including Maui United Way in your estate planning by making a bequest or planned gift. Your contribution can have a lasting impact on the community.

WISH LIST:

Help us fulfill specific needs by donating in-kind items or services.

30 FOR 30:

Contribute to our "30 for 30" campaign, combining volunteer and donation efforts, aimed at providing essential resources to individuals and families in need.

VEHICLE DONATION:

Donate your car, truck, or boat.

We extend our heartfelt gratitude to all our generous contributors. Your support truly makes a difference. Please refer to the following pages for a list of our most generous supporters. For a full list of Maui United Way donors visit us online.





2022-2023 MAHALO AWARDS

DEDICATION. COMMITMENT. SELFLESSNESS.

Each year, individuals and companies that make exceptional commitments to Maui United Way's campaign are honored with the Mahalo Awards. Congratulations to the 2022-2023 award winners for their dedication and support this campaign year. Please join us in saluting these fine awardees for creating hope for a better tomorrow.

FOUNDATION OF THE YEAR:

Bendon Family Foundation

BANK OF THE YEAR:

First Hawaiian Bank

PARTNER AGENCY OF THE YEAR:

Lahaina Arts Guild

EXCELLENCE IN PARTNERSHIP AWARD:

Hawaiian Electric

CAMPAIGN OF THE YEAR:

Enterprise Holdings

CAMPAIGN EXCELLENCE AWARD:

Goodfellow Bros.

BOARD MEMBER OF THE YEAR:

Mark Klaschka

EXCEPTIONAL DONOR OF THE YEAR:

Peter & Victorine Merriman



2022-2023 BOARD MEMBERS

LUKE BAILEY Finance Committee,
Investment Committee,
Pohaku Business Solutions

SANDY BAZ Finance Committee,
Investment Committee,
Maui Oil

ANDREA DEMETRAS Partnership Committee,
Retired Health Care Executive

MARK FORNWALL Partnership Committee,
Retired

LISA GROVE Partnership Committee,
Grove Insights

MARK KLASCHKA Vice Chair,
Marketing & Fund Development Committee,
Pleasant Holidays

U'ILANI TANIGAWA LUM, ESQ. Partnership Committee,
Law Office of U'ilani Tanigawa Lum

WENDY MACAHELEG Marketing & Fund Development Committee
Coldwell Banker Island Properties

LALAINA MANLAPAO Treasurer,
Investment Committee,
First Hawaiian Bank

ELLEN NASHIWA Secretary,
Marketing & Fund Development Committee,
Partnership Committee,
Hawaiian Electric Company

JAMIE PEACOCK Finance Committee,
Marketing & Fund Development Committee
Insurance Associates, Inc.

SIMON POOLE Goodfellow Bros., Inc.
JENNIFER SALISBURY Finance Committee,
Valley Isle Enterprises, Ltd.

JENNIFER TAKAYESU Marketing & Fund Development Committee,
Aloha International Employment, Inc.

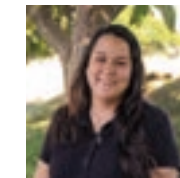
SHANDA VANGAS Chairwoman,
Partnership Committee,
Fourth Wave Strategies, LLC

JAYSON WATTS Mahi Pono LLC
JASON WILLIAMS Investment Committee,
Maui Wealth Management

MAUI UNITED WAY STAFF



NICHOLAS WINFREY
President & Chief
Professional Officer



TATIANA MEDEIROS
Maui 211 Operator



MAKANA NUNES
Community Impact
Coordinator



ANGELA STEWART
Campaign &
Projects Coordinator



SHERRY YAMASHITA
Director of
Operations



ASTRID GRUPENHOFF
Advancement
Consultant

FINANCIAL STATEMENT

AUDITED FISCAL YEAR 07/01/21 - 06/30/22

ASSETS

CURRENT ASSETS

Cash and Cash Equivalents	\$114,174
Pledges Receivable	\$92,224
Allowance for Uncollectible	(\$26,000)
Prepaid Expenses	\$10,862

Total Current Assets \$191,260

FIXED ASSETS

Furniture & Equipment	\$55,985
Less Accumulated Depreciation	(\$55,985)

Net Fixed Assets \$0

OTHER ASSETS

Investments	\$2,267,834
-------------	-------------

Total Other Assets \$2,267,834

TOTAL ASSETS \$2,459,094

LIABILITIES & NET ASSETS

CURRENT LIABILITIES

Accounts Payable	\$44,758
Payroll Liabilities	\$7,534

Total Current Liabilities \$52,292

TOTAL LIABILITIES \$52,292

NET ASSETS

Net Assets without Donor Restriction	\$1,228,548
Net Assets with Donor Restriction	\$1,178,254

Total Net Assets \$2,406,802

TOTAL LIABILITIES & NET ASSETS \$2,459,094

EXCEPTIONAL DONORS

WHO HAVE INVESTED \$1,000 OR MORE TO THE CURRENT CAMPAIGN.

PHILANTHROPIST: \$50,000 +

Bendon Family Foundation

VISIONARY: \$25,000 +

Kaanapali Ocean Resort

Charitable Trust

Peter & Victorine Merriman

Sentry Insurance Foundation

GUARDIAN: \$10,000-\$24,999

Atherton Family Foundation

Vikram & Vandana Chalana

First Hawaiian Bank Foundation

Lawrence & Mary Hughes

Pete & Laura McPartland

The Roy H. and Lorraine M.

Okumura Foundation

HUMANITARIAN: \$5,000-\$9,999

Robert W. Clark Charitable

Foundation, Inc

Sumner & Angela Erdman

MDU Resources Foundation

United Way Worldwide

PARTNER: \$2,500-\$4,999

Mario K. Capobianco-

AhPuck

Elizabeth Grove

Rodrigo K. Iasuda

SUPPORTER: \$1,000-\$2,499

Laksmi Abraham

Krista L. Alvarado

Grace Ancateu

Annabel R. Arase

Brittani N. Capps-Balinbin

Richard T. Bissen

Francisco V. Camacho

Shayna-Marie Carroll

David & Jane Casper

Linda & Charles Chandler

Chris S. Corpuz

Scott Crockford

R. Dougal Crowe

Marada & Linda Decker

Andrea Demetras

Cyd Kau'i Awai-Dickson

Michael B. Dolan

James V. Feiteira

Fipe Fononga

Jeffrey Thomas Giese

Tia Hanchett

The Haynes Family Fund

William Hemelt

Alec R. Hernandez

Spencer S. Ishikawa

Russell E. Johnson

Ronald Kawahara

'Ohana Kealoha Party of 7

Donna M. Lucero-In Honor

of Benjamin Rivera

Todd Macfarlane

Elvis Magbual

Alan & Debra Marten

Cynthia G. Mattox

Katherine Maxfield

James E. McDonald, Jr.

Mathew M. McNeff

Ellen S. Nashiwa

David M. Nelson

Douglas K. Nicolas

Charles R. Oliveira

Ralph Pais

Mr. & Mrs. Ricky A.

Purdy, Sr.

Michael & Jean Regan

Carol K. Reimann

Leslie L. Resnick

Christopher R. Reynolds

Frank Rocha

Bruce & Ann Rovner

Gregg A. Rowe

Shari Sanches

Henry L. Tavares III

Brad Uchida

Lynne T. Uchima

Vangas Women & Girls

Endowment Fund

Jacob W. Verkerke

Rick & Erin Volner, Jr.

Mason & Trudy Williams

Nicholas & Nicole Winfrey



OUTSTANDING COMMUNITY SUPPORTERS



Outstanding businesses combined with the support of their employees, who have generously contributed to our Maui United Way Campaign.

VISIONARY: \$25,000-\$49,999

Enterprise Holdings
Goodfellow Bros., Inc.
Hawaiian Electric Company

GUARDIAN: \$10,000-\$24,999

Matson Navigation Company

HUMANITARIAN: \$5,000-\$9,999

Bank of Hawaii
County of Maui
Hale Mahaolu
Hawaii Gas
HC&D
United Way Worldwide

PARTNER: \$2,500-\$4,999

A&B Properties
Aloha House

Costco
Hale Mahaolu (3,615)
Hawaiian Cement
Hawaiian Dredging & Construction
ILWU Local 142
Kahului Trucking & Storage
Kamehameha Schools-Maui
Malama Family Recovery Center
Maui Adult Day Care Centers
Maui Economic Opportunity, Inc.
State of Hawaii

SUPPORTER: \$1,000-\$2,499

American Savings Bank
Arisumi Brothers
Child & Family Service
First Hawaiian Bank
Grace Pacific Corporation
Hirose Electric
HMSA
Ka Hale A Ke Ola
Maui Beach Hotel

Maui United Way
Seabury Hall
Target
TD Foodgroup (Pizza Hut & Taco Bell)
The Fairmont Kea Lani Maui
The Maui Farm
Walker Industries, Ltd.
Women Helping Women
Zilber Ltd.

COMMUNITY: \$500-\$999

Destination Residences Hawaii
Foodland Supermarkets
Kupu Hawaii
Maui Family Support Services
Maui Fire Control
Maui Oil Company
Maui Toyota
Maui Youth & Family Services
Par Hawaii
Takamiya Market
Times Supermarket - Kihei

SAVE THE DATE - AUGUST 26, 2023



MAKING AN IMPACT WITH OUR COMMUNITY PARTNERS

2022-2023 FUNDING



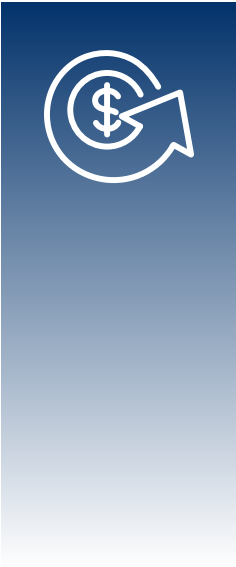
EDUCATION - HELPING CHILDREN AND YOUTH ACHIEVE THEIR POTENTIAL THROUGH EDUCATION

Best Buddies International \$6,522.50 Maui School Friendship Program	Kupu \$13,351.00 Hands-on Training in Conservation & Environmental Education for young adults
Big Brothers Big Sisters Hawaii, Inc. \$8,165.00 One-to-One Mentoring for Youth	Lahaina Arts Guild \$10,500.00 Free Art Classes for children
Boys & Girls Clubs of Maui \$8,842.00 Ultimate Journey at the Club and in Life	Maui Family Support Services, Inc. \$13,423.00 Early Head Start (EHS) - Early Childhood Education
Child & Family Service \$13,865.80 Maui Sexual Assault Prevention & Education	Maui Hui Malama \$13,108.00 Education Training Serving Maui's Youth
Girl Scout Council of Hawaii (Maui) \$5,919.00 Girl Scout Leadership Experience	Maui Mediation Services \$8,851.00 Conflict Resolution Services & Training
Hana Arts \$13,693.00 Arts & Cultural Education in East Maui	Pa'ia Youth Council, Inc. \$6,045.00 Pa'ia Bay Café
IMUA Family Services \$16,829.64 Infant & Early Childhood Services	



INCOME - HELPING FAMILIES BECOME FINANCIALLY STABLE AND INDEPENDENT

Catholic Charities Hawaii \$8,764.00 Community of Hope Program	Ohana Makamae, Inc. \$7,000.00 Ka Mohala
Common Ground Collective \$13,000.00 Maui Foster Farming Project	PATCH-People Attentive to Children \$5,955.00 Cash for Caring
Habitat for Humanity Maui \$7,500.00 Homeownership Education & Financial Literacy	The Maui Farm, Inc. \$9,044.50 Family Strengthening Program
Hale Mahaolu \$18,287.50 Homeownership & Housing Counseling Program	The Salvation Army, Maui County \$11,060.00 Family Services Program
Ka Hale A Ke Ola Homeless Resource Centers, Inc. \$13,601.00 Employment Support Services	



HEALTH - IMPROVING PEOPLE'S HEALTH

Aloha House \$15,014.20 Medically Monitored Detoxification	Maui Youth and Family Services \$14,033.20 Substance Abuse Treatment for Adolescents
Alzheimer's Association Aloha Chapter (Maui) \$8,504.00 Education Programs on Alzheimer's Disease and Brain Health	Mental Health America of Hawaii, Maui \$13,117.00 Mental Health Education, Advocacy and Family Strengthening
American Lung Association \$10,000.00 Asthma Friendly Schools for Maui Keiki: A Comprehensive Approach	Mental Health Kokua \$13,000.00 Residential & Psycho-Social Rehabilitation Services
Feed My Sheep \$13,357.30 Mobile Food Distribution	Na Hoaloha \$7,590.00 Escort Transportation Volunteer Program
Hospice Maui \$16,103.99 Hospice Care	Parents and Children Together (PACT) \$6,090.00 Maui Family Peace Center
Hui No Ke Ola Pono, Inc. \$11,928.80 Traditional Hawaiian Practices	Planned Parenthood of The Hawaiian Islands-Maui \$14,561.50 Sexual & Reproductive Health Care for Low Income Patients
La'akea Village \$13,000.00 Empowers People of all Abilities to Live, Work, Learn, Play, and Thrive Together	Women Helping Women \$14,656.00 Emergency Shelter & Support Programs for Victims of Domestic Violence
Lāna'i Kīna'ole \$13,342.00 Serves Clients in their Home Environments or at a Community Location	
Malama Family Recovery Center \$15,013.30 Therapeutic Living Program for Women	
Maui Adult Day Care Centers \$18,811.00 Elderly Day Care Services	





Maui United Way

CHANGING LIVES & IMPROVING OUR COMMUNITY

OUR VISION:

The trusted leader to unite Lana'i, Maui, and Moloka'i in providing opportunities for our community to flourish sustainably.

95 Mahalani Street, Suite 24, Wailuku, HI 96793

808-244-8787 • www.MauiUnitedWay.org